

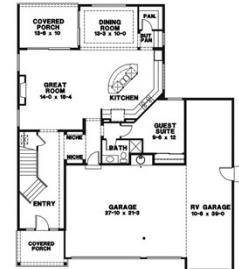
\$ 1,199,950



FRONT ELEVATION



UPPER FLOOR PLAN



MAIN FLOOR PLAN

MAIN FLOOR: 1863 SQ. FT.
UPPER FLOOR: 1863 SQ. FT.
TOTAL: 3004 SQ. FT.
GARAGE: 882 SQ. FT.

21004 67th Street Ct E, Bonney Lake, WA 98391

- » Beds: 5 | Baths: 2 Full
- » MLS #: 2321714
- » Single Family | 3,006 ft² | Lot: 7,493 ft²
- » More Info: [2100467thStreetCtE.IsForSale.com](https://www.2100467thStreetCtE.IsForSale.com)



Gary Hendrickson
 Licensed Real Estate Broker
 (253) 405-1099 (Cell)
 garyh@gh1team.com
<https://www.bhssouthsoundproperties.com/>



LUXURY COLLECTION™

BHHS South Sound Properties
 1251 Regents Blvd
 Fircrest, WA 98466



Local builder High Country Homes offers modern craftsman home with large 3 car garage and attached 10X39 ft RV Bay with 13x9 ft door. Grand 2 story entry leads to great room with gas fireplace w/tile surround and floating mantle. Dining area has beverage bar, full height tile, floating shelves. Chef kitchen w/SS appls gas range & side by side fridge, large pantry. Main level den/guest w/3/4 bath. Upper level Primary suite w/5pc bath includes freestanding tub & frameless glass shower, walk-in closet. 3 add'l bedrooms up + loft. Slider to covered patio w/overhead heaters overlooks large yard. Heat pump included. The Enclave, a new home community, adjacent to Lake Tapps close to shopping & schools. Photos are not of actual home but same plan.

License#: 35917.

©Properties Online, INC. The above information including square footage is deemed reliable but has not been independently verified and cannot be guaranteed. BHH Affiliates, LLC. An independently owned and operated franchisee of BHH Affiliates, LLC. Berkshire Hathaway HomeServices and the Berkshire Hathaway HomeServices symbol are registered service marks of HomeServices of America, Inc.® Equal Housing Opportunity. Information not verified or guaranteed. If your home is currently listed

